



37 Castle Farm Road, Bristol, BS15 3NN

Offers In The Region Of £750,000

Nestled on Castle Farm Road in the charming area of Hanham, Bristol, this delightful semi-detached cottage is a true gem, believed to date back to the mid-1700s. With its rich Georgian character, this property offers a unique blend of historical charm and modern comforts, making it an ideal home for couples or families who appreciate the beauty of nature and gardening.

The cottage boasts three well-proportioned bedrooms, including a master suite complete with an en suite bathroom and a private balcony that overlooks the stunning gardens. The property is arranged over three levels, providing ample space for both relaxation and entertaining. The inviting inglenook fireplaces in the dining area and sitting room add a warm and cosy atmosphere, perfect for those chilly evenings.

Set in a secluded position within the nature reserve, this locally listed property has only had two owners in the last 65 years, reflecting its enduring appeal. The current owners have lovingly transformed the garden into a picturesque haven, featuring a well-stocked vegetable garden, a charming pond with a bridge, and a delightful courtyard garden that is perfect for outdoor furniture and al fresco dining. With over 20 varieties of snowdrops blooming throughout the spring, the garden is a true spectacle of nature.

Entrance via wooden front door into

Open Plan Hallway/Dining Room

15'5" x 12'0" (4.70 x 3.68)



uPVC double glazed window to front aspect, double radiator, tiled flooring, exposed wooden beams, inglenook fireplace with wood burning stove, understairs storage cupboard, stairs rising to first floor landing, wall lights, step up via a wooden door into sitting room, door with small step down into kitchen/breakfast room.

Sitting Room

16'8" x 14'7" (5.09 x 4.45)



Two uPVC double glazed windows to front aspect, 2 double radiators, storage cupboard with wooden shelving, inglenook fireplace with wood burning stove and quarry tiled hearth, wooden beams.

Kitchen/Breakfast Room

20'8" x 11'0" (6.31 x 3.36)



uPVC double glazed windows to rear aspect overlooking the courtyard, uPVC double glazed stable door to courtyard and rear garden, tiled flooring, 2 double radiators, inset spots, a range of floor units with wooden worksurfaces over, peninsula bar area with

storage beneath, 1 1/4 bowl sink drainer unit with chrome mixer taps over, deep tiled windowsills, integrated full sized dishwasher, a range of pan drawers, space for a electric hob with extractor hood over, space for breakfast table, space and plumbing for American fridge freezer, alcove glass fronted display cabinets with storage beneath, storage cupboard with hanging space and shelving, steps through a wooden door into

Utility Room



uPVC double glazed window to side aspect, Velux window to side aspect, space and plumbing for washing machine, storage cupboard with shelving, tiled flooring, door to

Downstairs W/C

Suite comprising low level w/c, wash hand basin with mixer tap, inset spots.

First Floor

Study/Bedroom Four

15'5" x 12'4" (4.71 x 3.78)



uPVC double glazed window to front aspect, double radiator, storage cupboard, exposed wooden beams, wall lights, feature fire, door to bedroom two, steps up into master bedroom.

Family Bathroom

8'9" x 7'8" (2.68 x 2.36)



Velux window to rear aspect, suite comprising low level w/c, wash hand basin with mixer taps over and storage beneath, freestanding bath with shower attachment over, exposed wooden beams, inset spots, storage cupboard with shelving, tile effect flooring, chrome heated towel rail, door to

Bedroom Two

12'9" x 11'2" (3.91 x 3.41)



Velux window to rear aspect, uPVC double glazed window to rear aspect, double radiator, inset spots, exposed wooden beams.

Master Bedroom

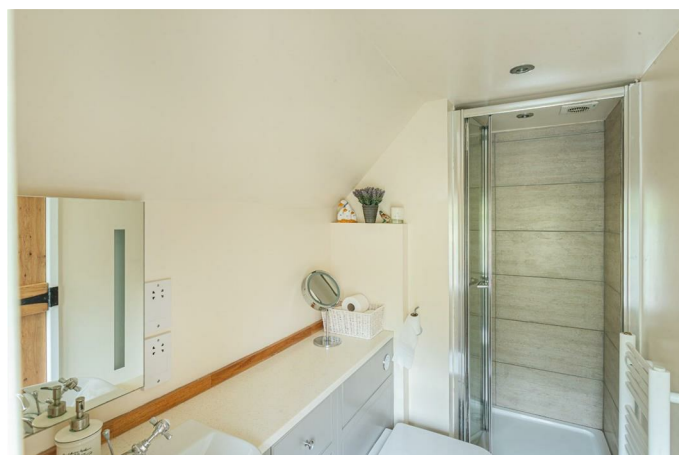
17'1" x 9'2" (5.23 x 2.80)



uPVC double glazed window to front aspect, uPVC double glazed doors to balcony, double radiator, inset spots, contemporary wall mounted radiator, door to walk in wardrobe with uPVC double glazed window to rear aspect, quarry tiled windowsill, hanging space, airing cupboard with light, shelving and hot water tank, door to

Ensuite Shower Room

8'1" x 3'0" (2.47 x 0.92)



Obscured uPVC double glazed window to side aspect, tiled flooring, single radiator, concealed cistern w/c, wash hand basin with mixer tap over and storage cupboards, electric heated towel rail, fully tiled shower cubicle with hinged glazed door and electric Mira shower over, inset spots, extractor.

Balcony

14'7" x 8'7" (4.45 x 2.63)

Enjoys views across the beautiful gardens to the side and rear, the balcony can also be accessed from the

garden via a spiral staircase. This area is ideal for garden furniture enabling you to enjoy the garden.

Second Floor

Bedroom Three

13'11" x 12'4" (4.25 x 3.77)



uPVC double glazed low level window to front aspect, Velux window to rear aspect enjoying views across the garden, exposed beams, inset spots, double radiator, storage cupboards, space for freestanding wardrobe, inset spots.

Outside



The front of the property has a grey slate driveway providing off street parking and access to the garage via a metal up and over door, there is boundary stone walling with cock and hen finish, a flagstone path leads to the front door and covered porch (currently used for storing wood). The front gardens contain a mixture of spring bulbs, ground cover, shrubs and a beautiful established wisteria. A pedestrian gate gives access to the rear garden which has a range of different areas with well stocked mature deep planted borders containing herbaceous perennials, spring bulbs, climbers, roses and mature trees, there is a lawn area with a mature garden pond with bridge over. There is a wooden seating area in the corner of the garden with a summerhouse with access to a boiler room. A courtyard area is situated immediately adjacent to the cottage which is ideal for garden furniture with mature climbing plants. A further pedestrian gate leads down to the remainder of the garden with an area for compost and an open ended dry store for wood, a number of polytunnels, greenhouses and vegetable

gardens with a variety of fruit trees and a garden shed. The gardens are enclosed by a mixture of wooden fencing, evergreen clipped laurel and walls with cock and hen finish.

Boiler Room

Worcester oil fired boiler, door to back of the garage.

Garage

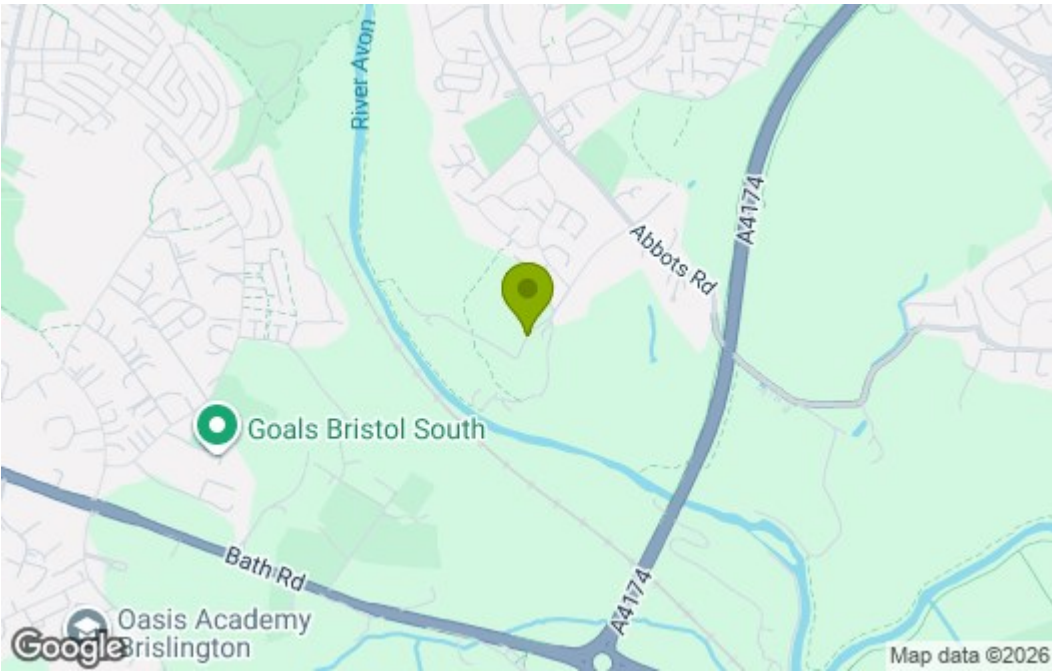
16'11" x 8'7" (5.16 x 2.63)

Power and light is connected, water softener, metal up and over door.

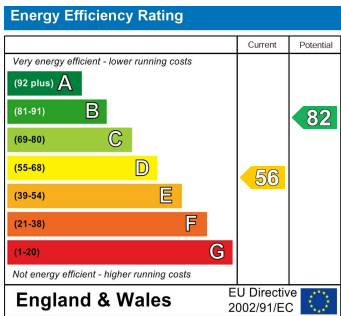
Floor Plan



Area Map



Energy Efficiency Graph



These particulars, whilst believed to be accurate are set out as a general outline only for guidance and do not constitute any part of an offer or contract. Intending purchasers should not rely on them as statements of representation of fact, but must satisfy themselves by inspection or otherwise as to their accuracy. No person in this firms employment has the authority to make or give any representation or warranty in respect of the property.